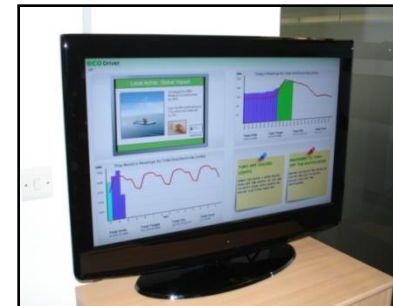


Managing & Promoting Sustainability

eco | Driver™

eco₂systems



eco₂systems – *'keeping the lid on CO₂ emissions'*

Contents

ecoDriver™



- ❑ **Product Background**
- ❑ **How it works**
- ❑ **Key features**
- ❑ **Case Studies**
- ❑ **Applications**
- ❑ **The Future**
- ❑ **Summary**



Product Background

UK plc faces:

Increased Energy Costs

Gas - increased 89% in last five years, 81% in past year!

Electricity - increased 83% in last five years, 28% in past year!

Oil – fluctuates dramatically!

Source Berr stats December 2008



Organisations seeking ways to reduce costs.

Current & Pending Legislation.

Energy Performance of Buildings Directive 2008 legislation.

Carbon Reduction Commitment legislation in 2010.



Government Targets.

+ CO₂ emissions to be cut by 50% by 2050.

+ CO₂ emissions to be cut by 34% by 2020 announced April 22nd '09.



Corporate Social Responsibilities.

Eco-driver in summary



Captures energy information & other sources of carbon emissions.

Presents information in easily understandable format.

Displays your organisation's data in 'real time'.

Clear detail covers three elements - units, money and CO₂.

Information enables all the organisation to take ownership .

All can work to reduce consumption and improve carbon footprint.

We help you run a cleaner, leaner organisation

Eco-driver Background

Developed by TR Control Solutions



Three years in development.

First Sites placed February 2007.



Winner of Microsoft Ingenuity Point Award 2008.

Currently in place and successfully reducing costs in:

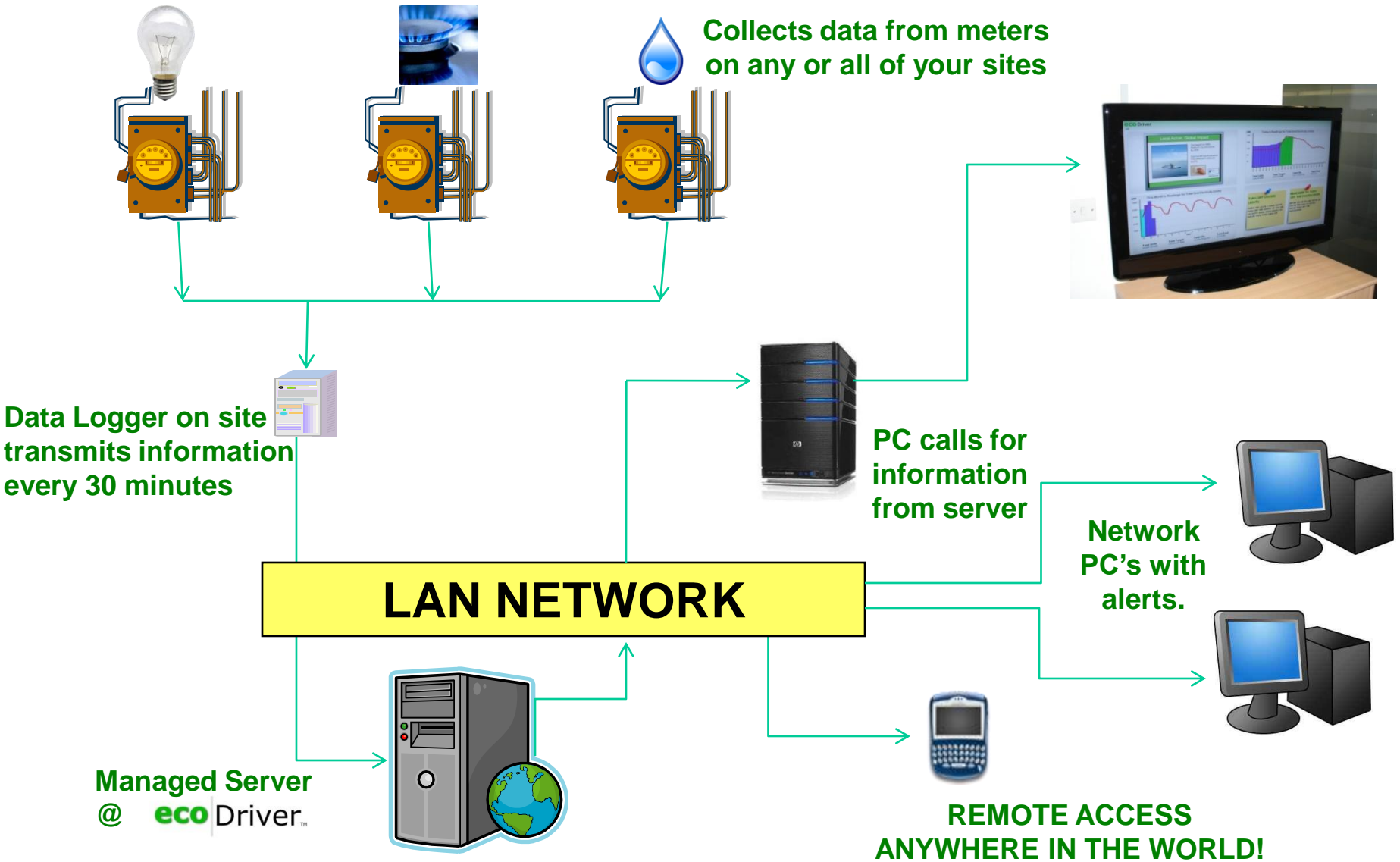
- Educational Establishments**
- Commercial Premises**
- Local Government**



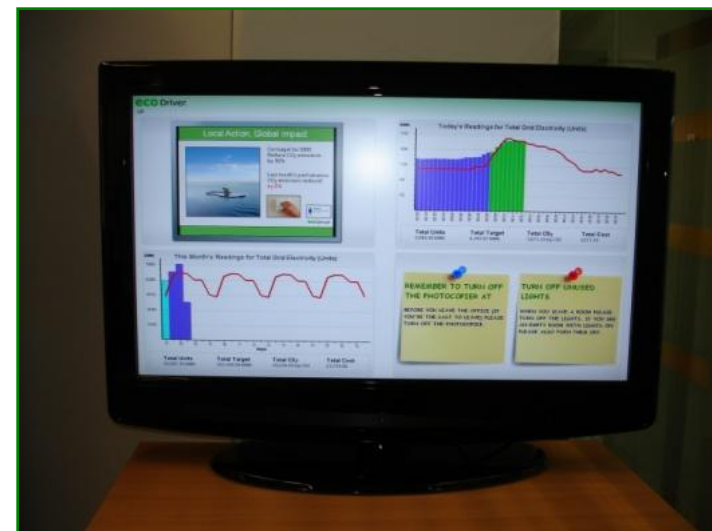
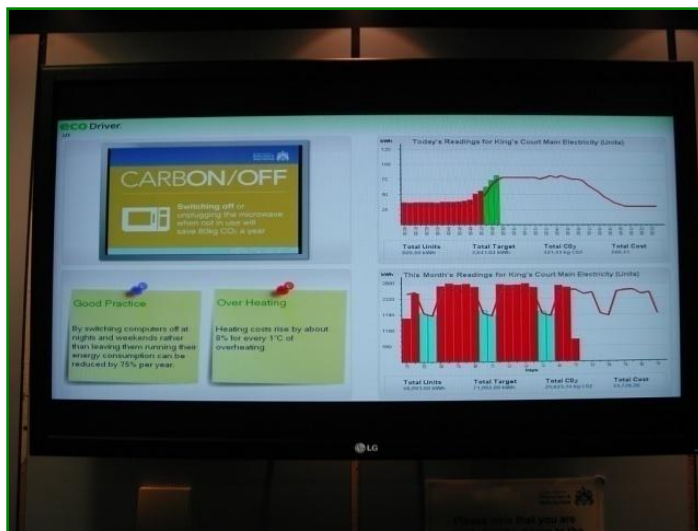
Launched by eco2 Systems 2009.



System Overview



In Situ.....Broadcasting Live Performance



Four Screens

eco Driver.

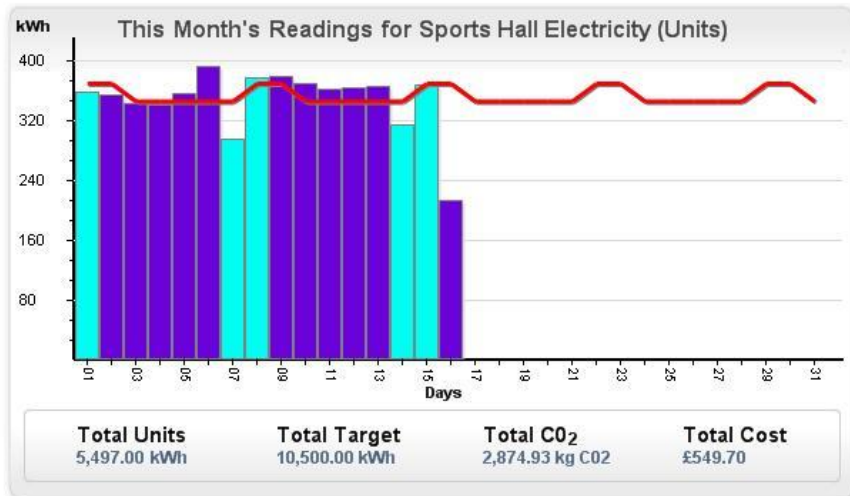
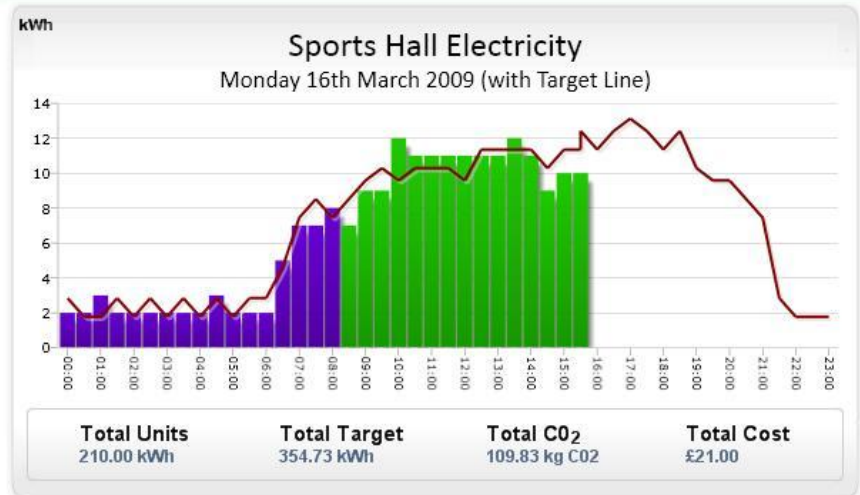
1/2

Managing & Promoting Sustainability

eco Driver. Solutions

Real-Time Sustainability Reporting

Microsoft the ingenuity pOint Award Winner



½ Hour Readings For Sports Hall

Units

Units Per Hour **20.00 kWh** CONSUMED
24 Hours at Current Rate 480.00 kWh

Value

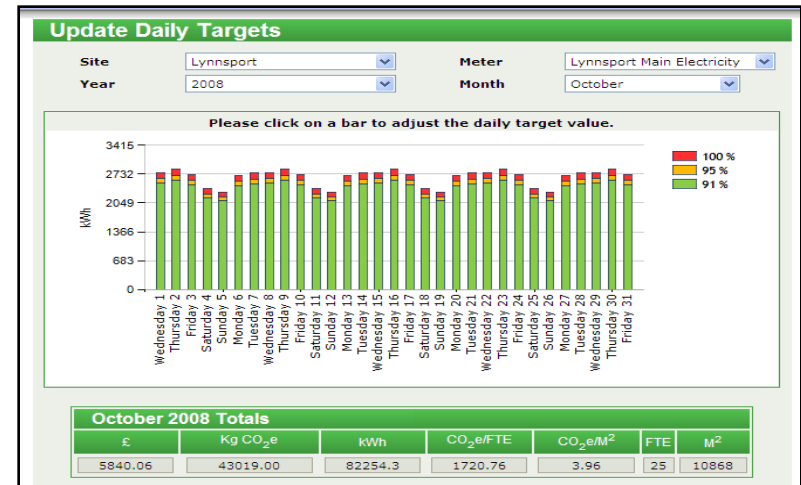
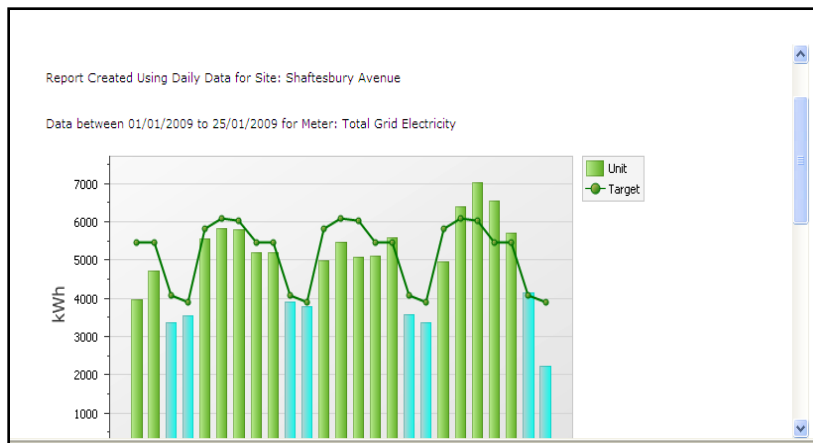
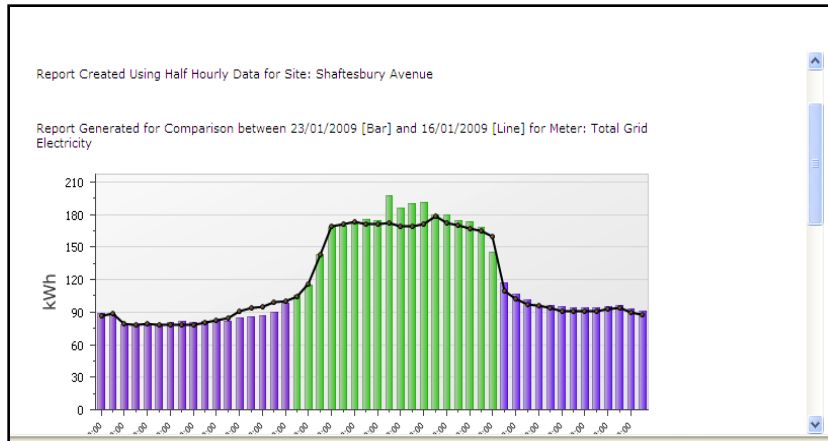
Cost Per Hour **£2.00** COST
24 Hours at Current Rate £48.00

CO₂

CO₂ Per Hour **10.460 Kg CO₂** EMITTED
24 Hours at Current Rate 251.040 Kg CO₂

Reading For
Monday, Mar 16, 2009 at 15:30:00

Professional Management Tools & Target Setting



Alerts & eco Tips

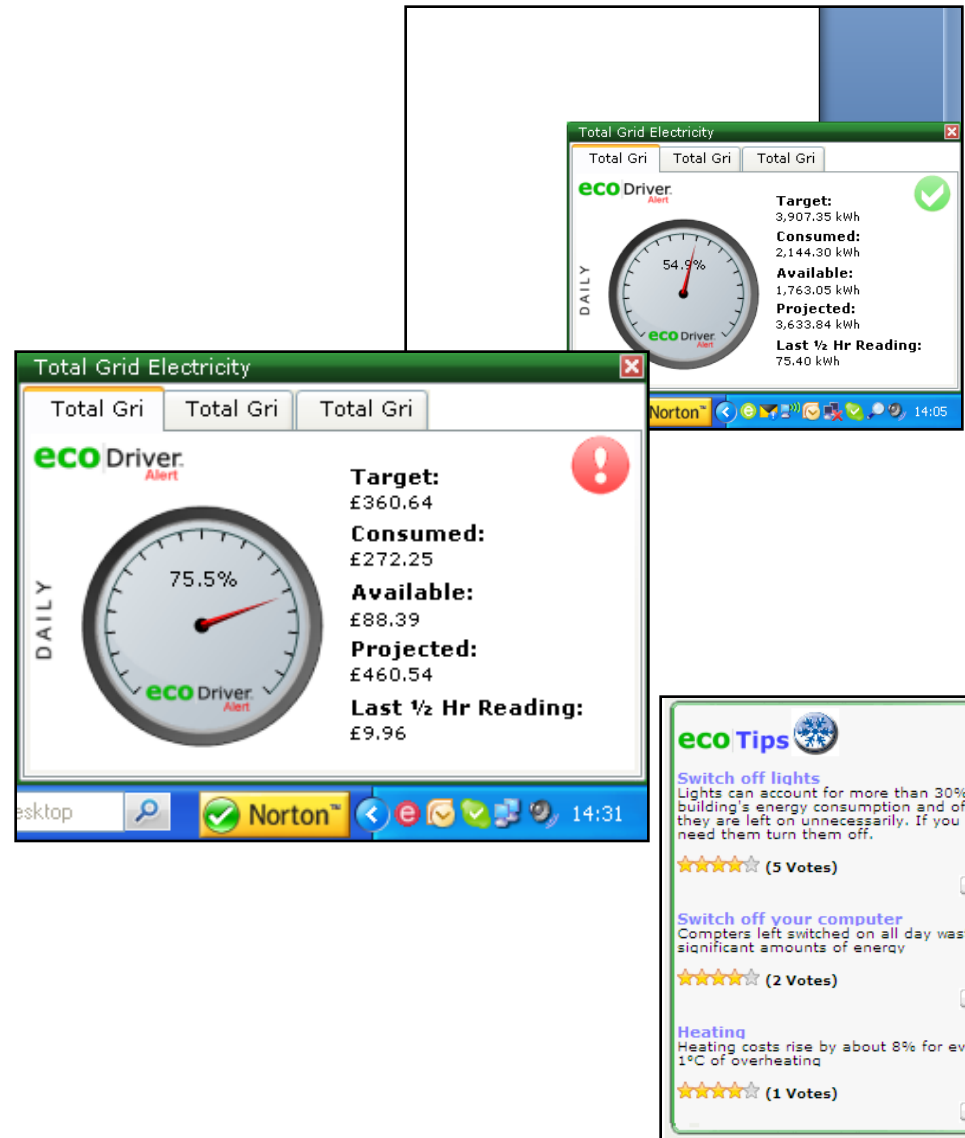
Alerts track usage vs targets against cost, consumption and CO₂ emissions on chosen period basis.

Traffic light system gives advance warning of excesses.

Two alerts fitted as standard.

Each alert covers three meters, actual or virtual.

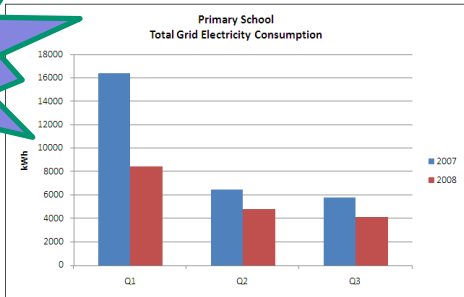
Optional eco tip box.



Case Studies

Savings of 40%

ecoDriver™ installed Q4 07

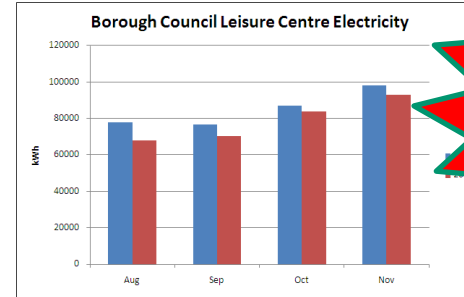


Savings (2007 / 2008, 3 quarters)

Units: 11,300 kWh, Cost: £1,130, CO₂: 5.9 tonnes

Background: School installed 25 x solar pv panels, 2 x solar thermal panels, a biomass boiler, energy efficient lighting & ecoDriver in 2007. Savings have been driven largely by the headteacher setting weekly targets for electricity consumption, by building & then rewarding the pupils by putting £10 per week into the school fund (for pupil expenditure). Pupils monitor progress via LCD display & by accessing ecoDriver reports.

ecoDriver™ installed July 08



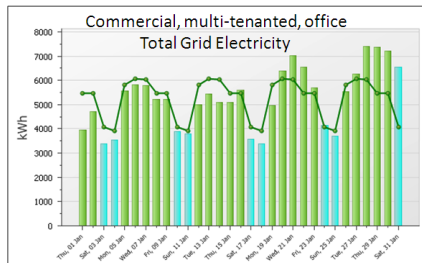
Savings (2007 / 2008, 4 months)

Units: 24,927 kWh, Cost: £2,400, CO₂: 13 tonnes

Background: ecoDriver installed mid-July 2008, LCD display in October 2008. Process of implementation raised awareness of importance of reducing consumption and focused attention on energy saving. During the period identified no new technologies or other initiatives were implemented.

Savings of 8%

ecoDriver™ installed December 08



Savings (Jan 08 vs. Jan 09)

Units: 45,000 kWh, Cost: £4,500, CO₂: 23.5 tonnes

Background: Installed ecoDriver mid-November 2008 but kept low profile until December 2008. Showed reports to building manager & building service engineers in December 2008 & helped identify action to reduce consumption. Switching off A/C equipment in the evenings & at weekends resulted in very significant savings & a very quick payback for ecoDriver.

Savings of 20%



Flexibility and Adaptability in situ.

Simple to configure.

Easy to change/amend

Unlimited pages.

Multiple plug-ins:

Microsoft Power Point,

Consumption / Generation charts

with Targets, Tips

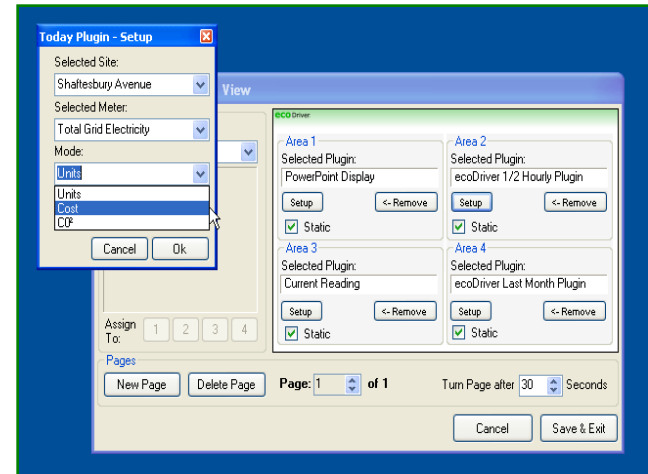
Multiple meters & sites.

Virtual Meters.

One or more screens.

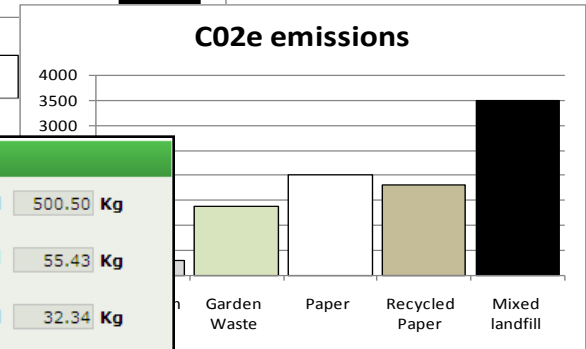
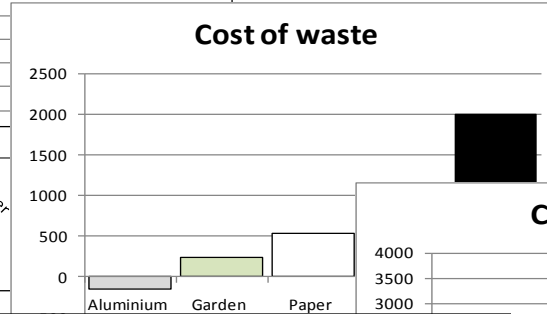
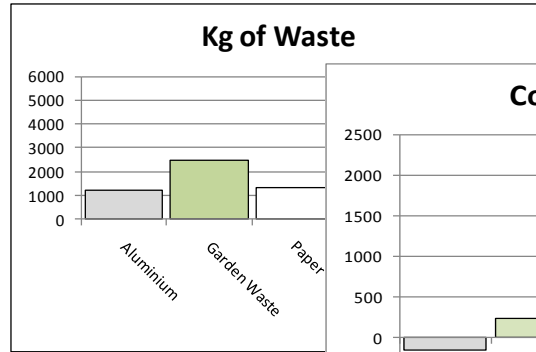
Ideal for any location seeking to reduce

CO₂ emissions.



PLUS - Waste Management Reporting

Waste Bin Details	
Bin type	All waste
Description	WHQ tin can recycle bin
Waste material	Aluminium
Kg CO2e/Kg	0.0987
Disposal	Recycle
Price per Kg	Income \$1.5012
Location	Basement WHQ
Reference code	Bin AL12312
Collected by	Waste removal inc.
Min. contents (Kg)	1.00
Max. contents (Kg)	100.00
Bin weight (Kg)	10.00

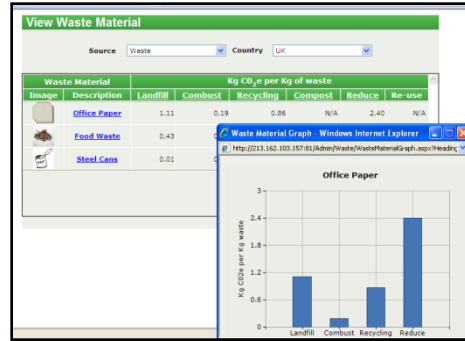


Waste Disposal

Source: Waste | Site: Willoughby Council HQ | Total Disposal: 500.50 Kg
 Date: Tuesday 23/09/2008 | Address: 12 Heyton Street, Pymble | CO₂e emitted: 55.43 Kg
 Time: 10:30 | Country: Australia | CO₂e saved vs. landfill: 32.34 Kg

Waste Type	Weight (Kg)	Destination
Compost Garden Waste	50 Kg	WHQ Garden Waste
Recycle Virgin paper	300 Kg	WHQ Paper Dump
Recycle Aluminium	100.50 Kg	WHQ Recycle Aluminium
Landfill General rubbish	50 Kg	WHQ Mixed landfill

PLUS – Business Travel Reporting



Summary

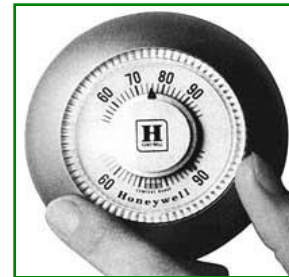
Eco-Driver measures your consumption.

Reduced consumption saves money and improves carbon footprint.

System is adaptable, flexible & future proof.

Ownership is spread across the whole organisation.

Customers/shareholders/stakeholders see your commitment to reduce CO₂ emissions.



Summary

eco | Driver™

eco₂systems

Helping you run a cleaner , leaner organisation

eco₂systems – 'keeping the lid on CO₂ emissions'